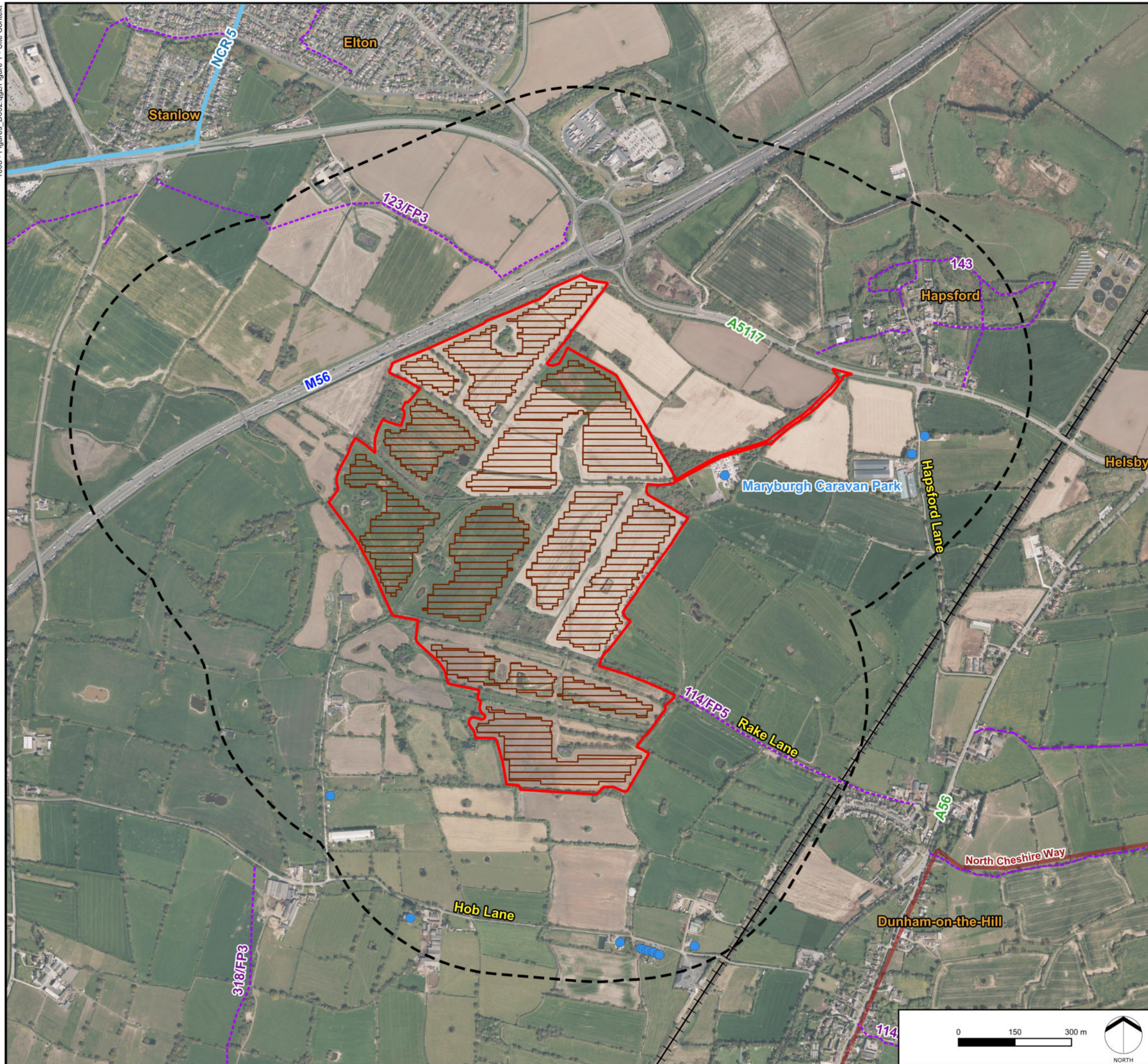


HOB LANE SOLAR FARM

FIGURE 1
Site Context



HOB LANE SOLAR FARM

FIGURE 2

Zone of Theoretical Visibility and Viewpoint Locations.

KEY

-  Site Boundary
-  Distance Radii from Site Boundary (1, 2, and 3km)
-  Buildings
-  Existing Vegetation over 2.5m
-  Viewpoints

Zone of Theoretical Visibility

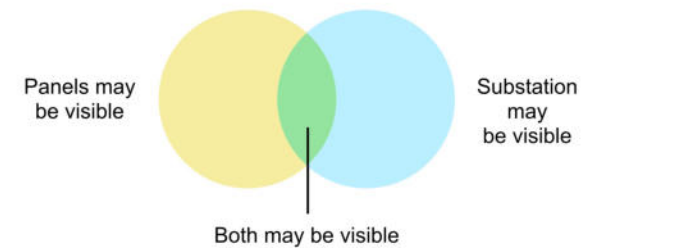


FIGURE DATA:

This figure has been based on the following data:

Layout files: D001-Obvs-panels_area-LiDARDTM-4km.shp and D001-Obvs-Substation-LiDARDTM-4km.shp
Terrain data: LiDAR&VOM-ScreeningDSM-2022-2m.asc
Viewer's eye height: 2m above ground level
Calculation grid size: 2m

NOTES:

This drawing is based upon computer generated Zone of Theoretical Visibility (ZTV) studies produced using the Viewshed routine in the Visibility Analysis plugin for QGIS.

The areas shown are the maximum theoretical visibility, taking into account topography, principal woodlands, vegetation higher than 2.5m, and buildings.

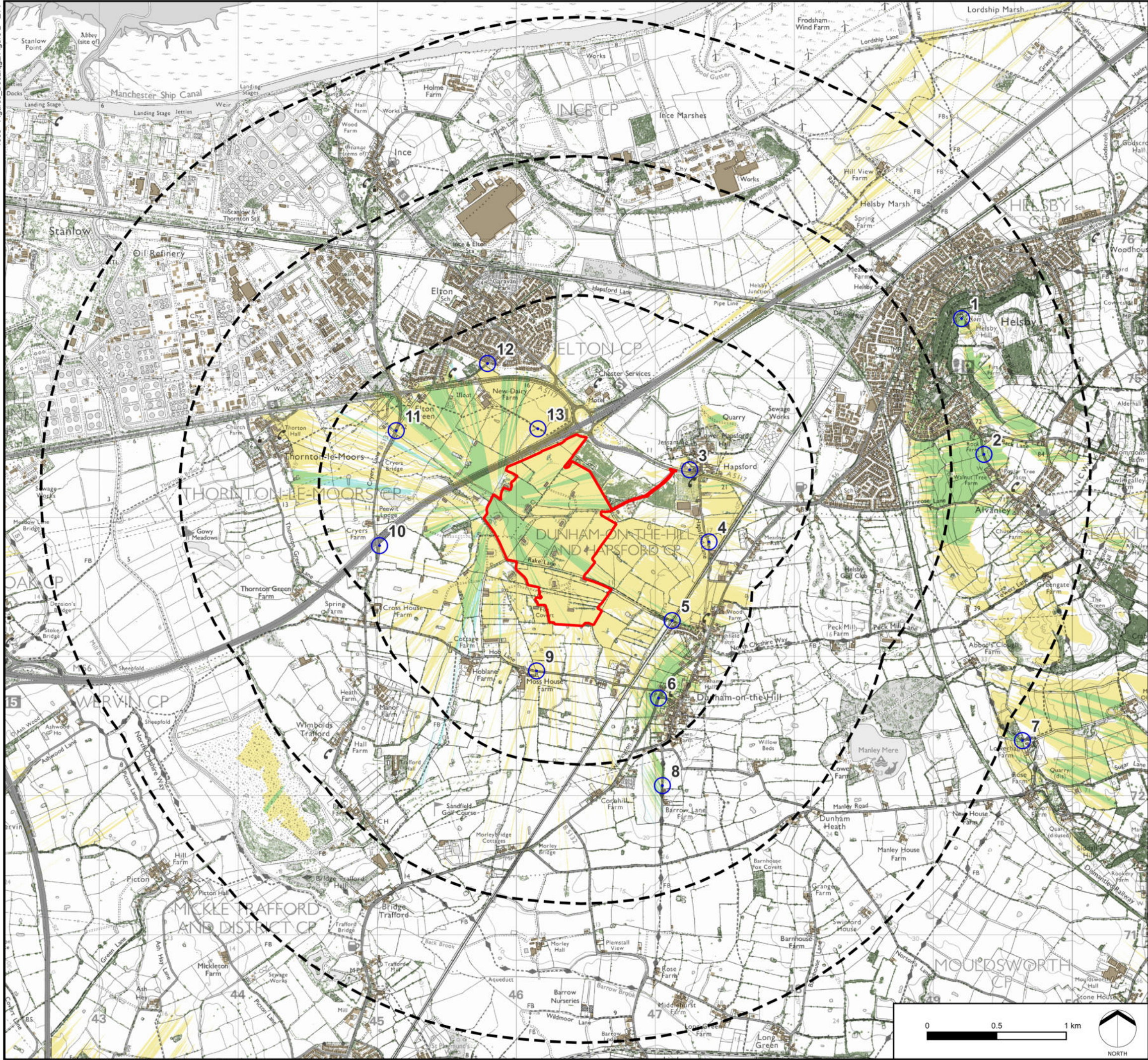
A digital surface model (DSM) has been derived from LiDAR height data. Locations of buildings have been taken from the OS Open Map Local dataset. Locations of woodland and vegetation higher than 2.5m have been taken from the Environment Agency's Vegetation Object Model dataset. Heights of buildings, woodland and vegetation have been taken from LiDAR First Return DSM height data.

The actual extent of visibility on the ground will be less than that suggested by this plan.

The ZTV includes an adjustment that allows for Earth's curvature and light refraction. It is based on a derived DSM and has a 2m² resolution.

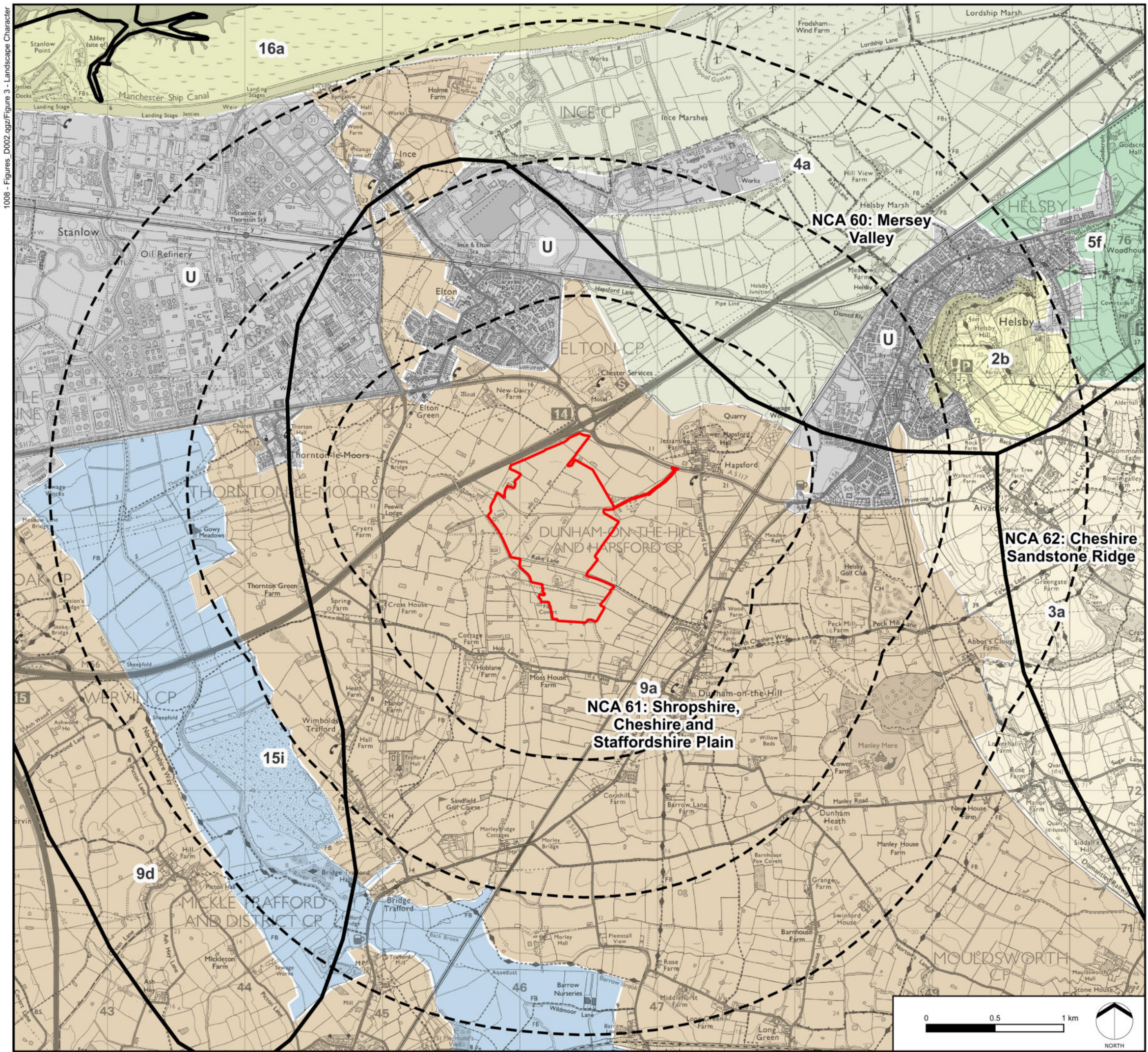
Projected Coordinate System: OSGB36 / British National Grid

DATE	SCALE	PAPER	BY	CHK	QA	REV
APR 2025	1:27,000	A3	LF	MP	XX	-



HOB LANE SOLAR FARM

FIGURE 3
Landscape Character



KEY

- Site Boundary
- Distance Radii from Site Boundary (1, 2, and 3km)
- National Character Area (NCA)

Cheshire West and Chester Landscape Strategy (2016)

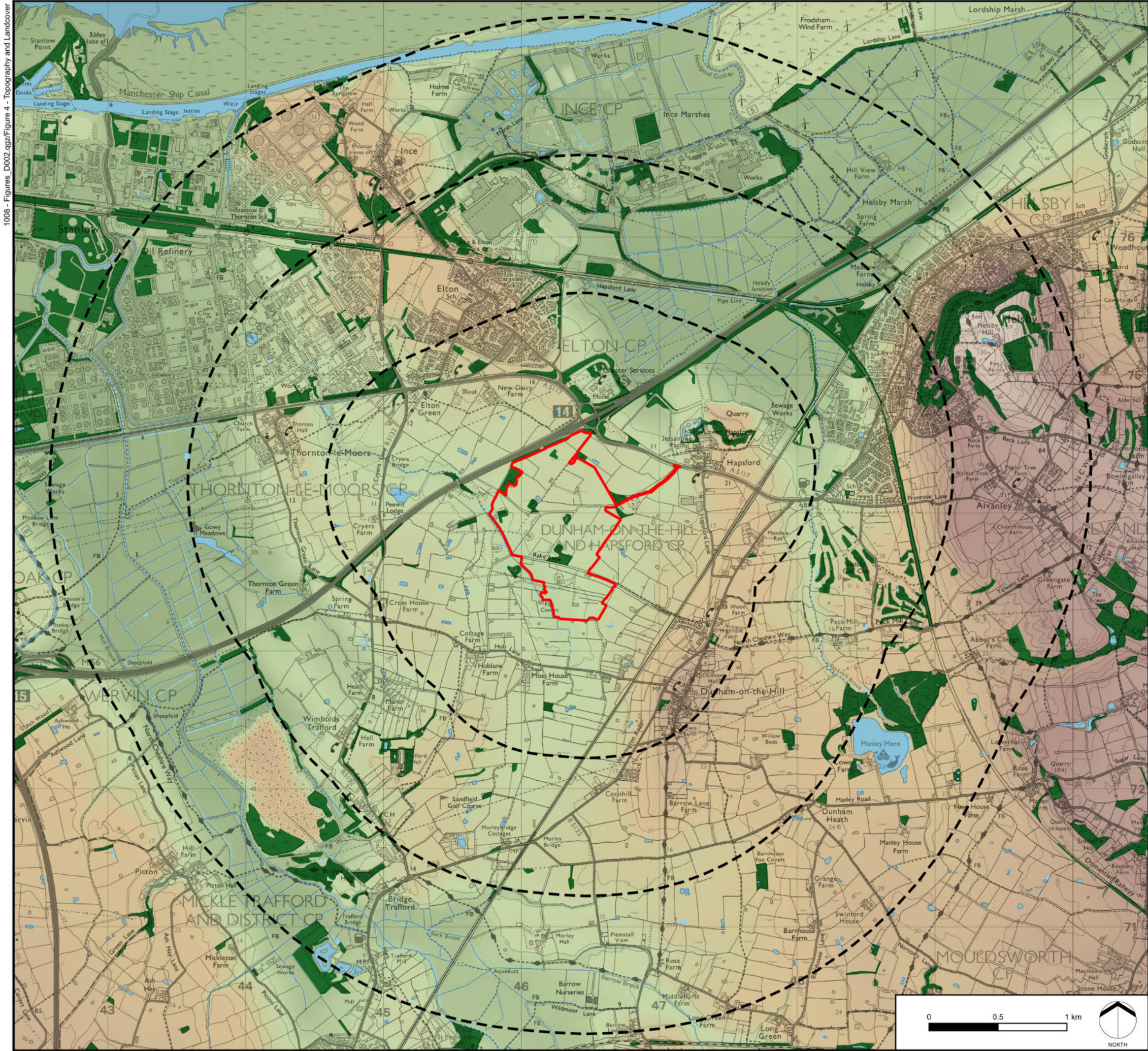
- LCT 2: SANDSTONE RIDGE
b) Helsby Hill
- LCT 3: SANDSTONE FRINGE
a) Helsby to Tarporley
- LCT 4: DRAINED MARSH
a) Frodsham, Helsby and Lordship Marshes
- LCT 5: UNDULATING ENCLOSED FARMLAND
f) Helsby to Frodsham
- LCT 9: CHESHIRE PLAIN WEST
a) Dunham to Tarvin Plain
d) Saughall to Waverton Plain
- LCT 15: RIVER VALLEYS
i) Gowy Valley
- LCT 16: MUDFLATS AND SALTMARSH
a) Stanlow & Ince Banks
- Urban

Projected Coordinate System: OSGB36 / British National Grid



DATE	SCALE	PAPER	BY	CHK	QA	REV
APR 2025	1:27,000	A3	LF	MP	CS	02

HOB LANE SOLAR FARM

FIGURE 4
Topography and Landcover





KEY

-  Site Boundary
-  Distance Radii from Site Boundary (1, 2, and 3km)

-  Woodland
-  Surface Water

Elevation (m AOD)

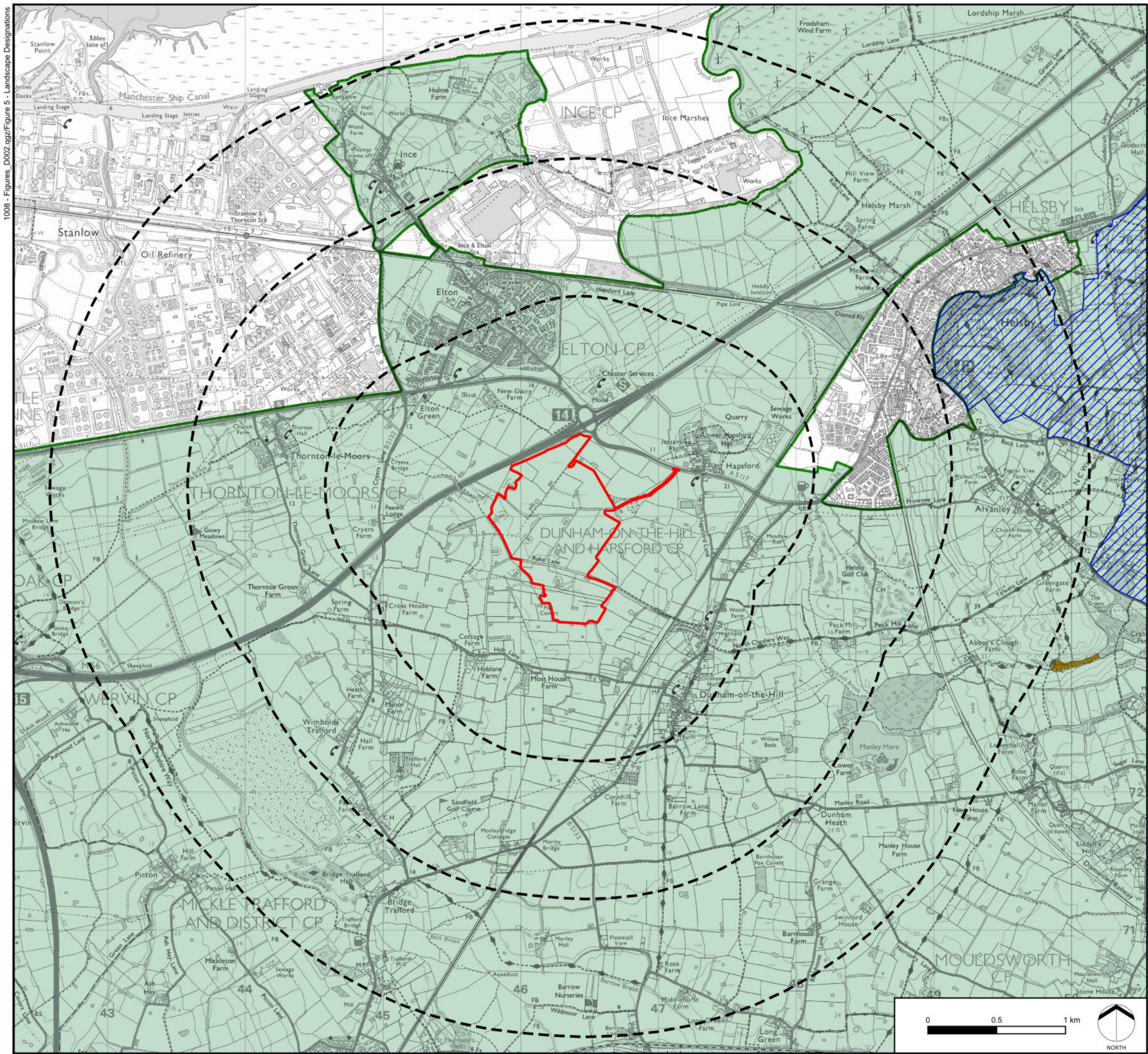
-  150
-  -1.1

Projected Coordinate System: OSGB36 / British National Grid

DATE	SCALE	PAPER	BY	CHK	QA	REV
APR 2025	1:27,000	A3	LF	MP	CS	02

HOB LANE SOLAR FARM

FIGURE 5
Landscape Designations and Sensitive Receptors



KEY

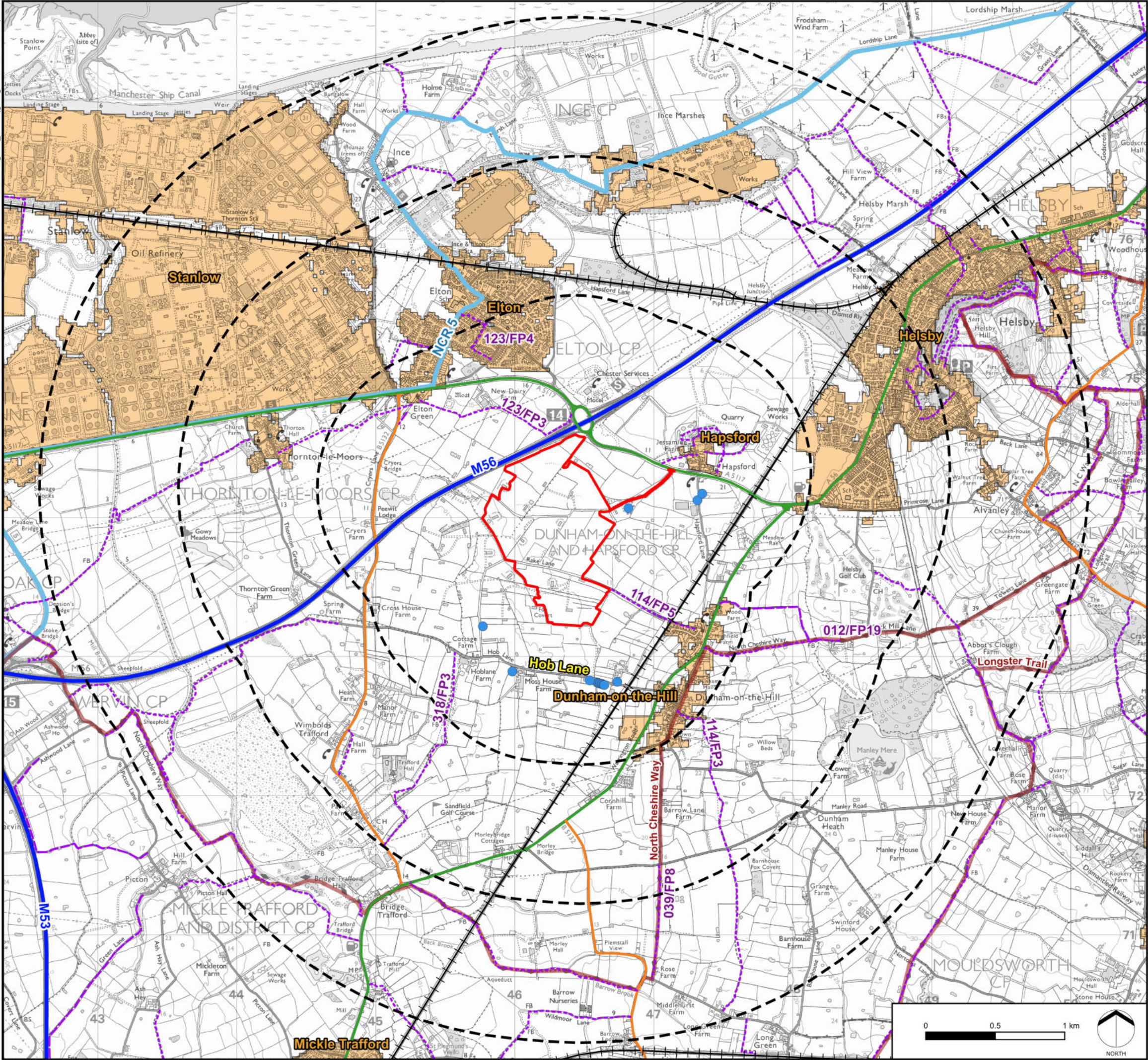
- Site Boundary
- Distance Radii from Site Boundary (1, 2, and 3km)
- Green Belt
- Area of Special County Value
- Ancient Woodland

Projected Coordinate System: OSGB36 / British National Grid

DATE	SCALE	PAPER	BY	CHK	QA	REV
APR 2025	1:27,000	A3	LF	MP	CS	02

HOB LANE SOLAR FARM

FIGURE 6
Visual Receptors



KEY

- Site Boundary
- Distance Radii from Site Boundary (1, 2, 3km)
- Settlements
- Nearby Properties
- National Trails
- Bridleway
- Footpath
- National Cycle Network
- Motorway
- Primary Road
- Secondary Road
- Railway Track

Projected Coordinate System: OSGB36 / British National Grid

DATE	SCALE	PAPER	BY	CHK	QA	REV
APR 2025	1:27,000	A3	LF	MP	CS	02